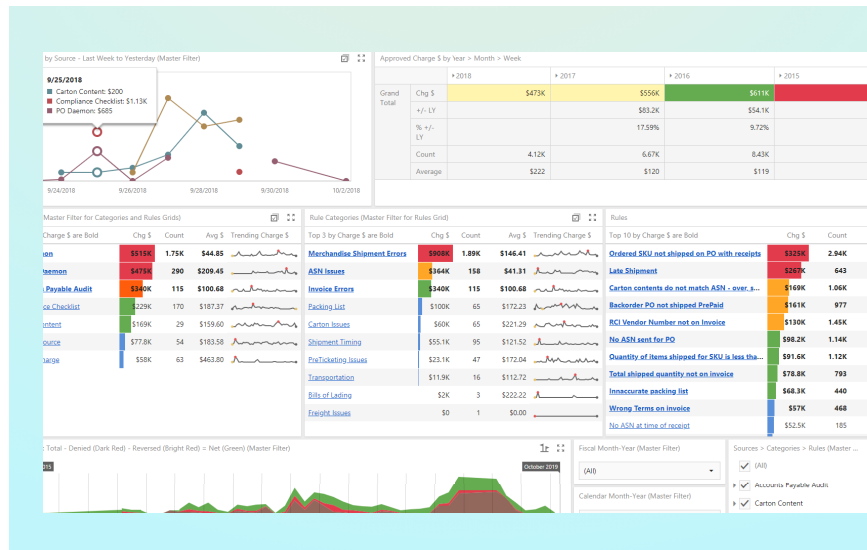


Get the answers you need to do your best work with a single, unified view of performance.

Passport is your ticket to higher performing partnership with the vendors you work with.

Passport Essentials is a subscription service that helps vendors and retailers align incentives through dashboards, specialized performance panels, and advanced data visualizations.

Passport Essentials' enhanced functionality and customization empower you to save time, improve performance, and avoid problems that erode reputation and lead to lost revenue.



“With Passport, I can see at a glance where I need to focus my time and effort. My retail customers and I can easily share relevant data, and that means we share a single point of truth. As a result, we can collaborate far more effectively with far less effort. Passport is – quite simply – a game changer.”

Jerry Glinnen,
 Director of Vendor Compliance, Lifetime Brands

Get started today.

Contact Barry Garvin for more information at barry@traversesystems.com, or 281-340-2034.

Passport Essentials

EVERY PASSPORT ESSENTIALS SUBSCRIPTION COMES WITH THE FOLLOWING CAPABILITIES:

✓ A Unified View of Performance

Gain access to specialized performance panels that provide you with a clear path to success.

The **This Year/Last Year panel** helps you determine at a glance how your performance is trending over the last 30 days and the trailing 12 months. Drill into the details and easily export data for further analysis – all automatically. With this critical information at your fingertips, you can quickly identify opportunities for improvement and take action.

In the **Recent Account Activity panel**, view all charges deducted, resolved disputes, and reversals applied in last 30 days. You can also see all open disputes and drill into the details of each.

✓ See More With Advanced Data Visualizations

When both parties have access to the right data, incentives naturally align. With Passport Essentials' advanced data visualizations, you will have all the information from vendors that you need to identify trends, quickly react to change, and avoid problems that lead to lost revenue.

You will also gain access to comprehensive panels to see actionable information including: charges, charge reversals, open disputes, and more. Drill into the details and export data for additional analysis.

✓ Effortless Collaboration

Good data is the key to strengthening relationships with vendors. Access key performance information from your business partners directly from the Passport Essentials portal to easily ensure that you and your vendors are on the same page.

✓ A Passport to Ease

Passport Essentials is full of additional features designed to save you time and reduce frustration:

Favorites – All inquiry, ad hoc, and analysis screens can be saved as favorites with preset filters to save time navigating to frequently used functions. You can also save frequently used reports as favorites.

Conditional Formatting – No need to spend hours looking for events. Simply tell Passport Essentials what you care about and what action to take when conditions are met; anytime the condition happens, the action will be performed.

Advanced Spreadsheet Functionality – Easily hide or re-sequence columns in an order that makes the most sense for your specific needs. Manage vast amounts of data with multiple column sort and simple filters.

✓ World-Class Knowledge and Support

With Passport Essentials, you have access to a self-serve knowledge base for seamless training and onboarding as well as telephone and email support.



Passport Premium

Explore how Passport can further level up your business. The options are unlimited. We can work with you and your suppliers 1:1 to determine what data you need and then design a solution that unlocks an even more successful business partnership.

Make Your Point-of-Sale Data Work for You

With ready access to critical point-of-sale data, including daily sales and inventory by store and item, you can forecast more accurately, respond with greater urgency to inventory changes, and take rapid action to capitalize on emerging trends.

Check Remittance

Passport can provide you with easy access to check-remittance details. This can include information about the invoices and items paid on a check including the cost and price adjustments. Chargebacks, allowances, and other deductions can also be included. Easily export this data from suppliers for further analysis or import it into your own systems.

Go Deeper with Scorecard Details

If your supply users custom scorecards, they can make those easily available within Passport. You can then drill into the details of each metric to perform root-cause analyses and troubleshoot supply chain issues in seconds.

Advanced Export or API

Set up scheduled processes to automatically receive data via email or subscribe to a customized API to receive data as it becomes available. We can also set up processes to auto SFTP data in various formats (CSV, EDI, simple fixed length, XML, etc.) in fixed intervals. When you can easily consume supplier data, you spend less time formatting and gathering data into systems and more time focused on exceptional performance.

Get started today.

Contact Barry Garvin for more information at barry@traversesystems.com, or 281-340-2034.

ABOUT TRAVERSE SYSTEMS

Traverse Systems is an interdisciplinary team of supply chain professionals. Our platform drives a unified understanding of your entire supply chain. Since 2000, we have served some of the world's most respected brands including CVS Health, Burlington Stores, Michael's, Tractor Supply, Kohl's and more. Our platform aggregates data from disparate systems and provides a holistic understanding of your operations so that nothing is left to chance.

Traverse Systems is proudly based in Sugar Land, Texas. To learn more, please visit: www.traversesystems.com.

