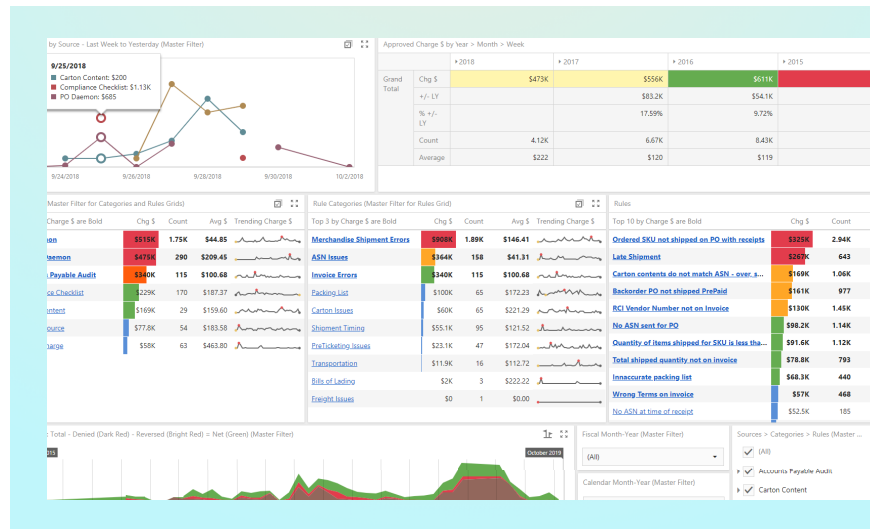


Transform your supply chain from a cost center into a margin contributor.

The Traverse Systems Platform (TSP) aggregates data from disparate systems to drive a unified understanding of your entire supply chain.

Eliminate departmental silos, improve supplier compliance, and monitor performance at the speed of business. Our out-of-the-box collaboration tools help you build a more consistent, predictable, and profitable supply chain.



A Ticket to Increased Profitability

A unified view of your supply chain performance presents opportunities for continuous improvement. The result is reduced supply chain days, improved supplier compliance, and increased profitability.

Here's a sample of the results that our customers have seen leveraging the Traverse Systems Platform:

- ✓ Raised ASN compliance rate from 76% to 92%
- ✓ Boosted distribution center productivity by 14%
- ✓ Removed eight days from their entire supply chain, a multi-million dollar savings
- ✓ Cut distribution center cycle time by more than 40%
- ✓ Reduced distribution cost per unit by 8%
- ✓ Eliminated 63% of problem shipments



Get Started Today

Contact Barry Garvin for more information at barry@traversesystems.com, or 281-340-2034.

TSP-Foundation Capabilities

Our core platform offering was developed to deliver the functionality you need to improve your supply chain visibility and performance. Features include:

✓ Automated Chargeback Calculation, Deduction, and Notification

Managing chargebacks is both tedious and time consuming. Automate the process including exemptions to ensure supply chain performance and focus your valuable resources on more strategic tasks.

✓ Nightly Alerts of Performance Exceptions Sent Directly to Suppliers with Photo Documentation

Ensure your suppliers performance by getting them the information they need in a timely manner to correct problems and improve behavior. Don't just describe what went wrong, show them.

✓ Trouble Shipment Tracking and Visibility

Gain seamless visibility into trouble shipment tracking so that you can address problems before they arise. Share the progress with all stakeholders including supply chain, merchandising/procurement and your suppliers.

✓ Hosted Capabilities for Supplier Requirements and Training Videos

Your supplier's success is your success. Provide tools and easily accessible resources to ensure your suppliers have the information they need at their fingertips to provide you with a high level of service.

✓ Mobile or Tablet Entry of Audits or Trouble Shipments at the Distribution Center

Enable your DC associates to cut through the paperwork and get back to work. Mobile or tablet entry streamlines the collection of data to minimize disruptions to DC flow while ensuring suppliers receive nightly performance exceptions.

✓ 24/7 self service supplier relations portal with access to the learning center

Maintain a line of open communication with your vendors to ensure everyone is aligned to achieve the same strategic goals. Easily manage supplier disputes in a centralized location for faster resolution. Provide your suppliers with the necessary data and tools to self improve their own performance.

✓ Automated debits & credits via accounts payable interface

Save valuable accounting resources by interfacing with your accounts payable system. Debits and credits are handled in the background freeing your team for higher value activities. Give your accounting department the data they need to resolve disputes quickly!

✓ Out-Of-The-Box Collaboration Tools

Great supply chains depend on great partners. TSP-Foundation includes tools to seamlessly align your entire partner ecosystem towards meeting your goals without making it your full time job.

✓ Business-Speed Performance Monitoring

Fully automated identification and reporting of events that disrupt the flow of merchandise allow you to respond quickly, rather than weeks later. Eliminate avoidable costs that reduce overall profitability.

✓ Automated and Manual Auditing

Our supply chain audit tools automate reporting and streamline communication with trading partners. Access a secure database for compliance information and create an unlimited number of manual and mobile audits.

✓ No Needed Integration

Our platform requires minimal data wrangling and zero integration to get started. You provision access to the necessary data, and we handle the rest.

✓ Fortress-Level Data Security




We offer secure IT hosting of client applications and hardware, including foolproof backups of critical business data.

“Getting up and running with Traverse was a seamless process. With Traverse, we have true visibility into our entire operation. Traverse’s tools allow us to bring together warehouse managers, directors, salespeople, and EDI departments from all the companies we work with, large and small. Traverse is absolutely a game changer. I can’t recommend them enough.”

*Marty Hahn,
Director of Vendor Relations, GNC*

Supplemental Platform Capabilities

Looking to increase visibility and control into other areas of your supply chain? The Traverse Systems Platform offers additional functionalities including:

-  **On-Time and In Full (OTIF) Monitoring**
OTIF measures an organization’s performance in delivering the items and value customers want, when they want it. Monitor your suppliers’ shipments to ensure you’re receiving priority shipping over your competitors and maintaining an edge in customer satisfaction.
-  **EDI & ASN Accuracy**
Nothing disrupts distribution center merchandise flow faster than late or inaccurate advance ship notices (ASNs). Monitor and confirm the EDI documents from your suppliers are timely, accurate and ensure inventory integrity.
-  **Transportation Compliance**
Your transportation spend is a big part of your supply chain budget. Interface your transportation management system (TMS) to ensure your suppliers are adhering to your routing guide to maximize profitability.

Traverse Systems Has Additional Offerings to Meet Your Supply Chain Goals



Passport is a subscription service that helps suppliers and retailers align incentives through dashboards, specialized performance panels, and advanced data visualizations.

As an offering for suppliers, it includes the capability to add critical information including Point-of-Sale data, Supplier Scorecard Metrics and check remittance data.

To learn more visit www.traversesystems.com/passport.



The Rivet™ SaaS Platform is a business partner management solution that minimizes the complexity, time, and expense associated with unproductive and costly business processes.

Seamlessly automate inefficient but necessary repeatable tasks, including supplier onboarding, annual terms and conditions, and certificate of insurance requirements.

To learn more visit www.rivet.traversesystems.com.



Get Started Today

Contact Barry Garvin for more information at barry@traversesystems.com or 281-340-2034.



ABOUT TRAVERSE SYSTEMS

Traverse Systems is an interdisciplinary team of supply chain professionals. Our platform drives a unified understanding of your entire supply chain. Since 2000, we have served some of the world's most respected brands including CVS Health, Burlington Stores, Michael's, Tractor Supply, Kohl's and more. Our platform aggregates data from disparate systems and provides a holistic understanding of your operations so that nothing is left to chance.

Traverse Systems is proudly based in Sugar Land, Texas. To learn more, please visit: www.traversesystems.com.