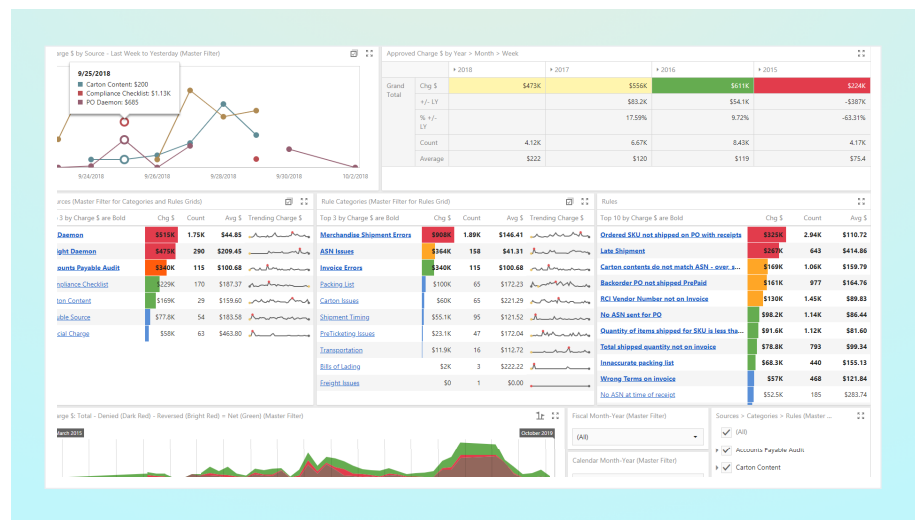


It's Time for a New Approach to Wholesale Distribution Supply Chain Performance

Wholesale Distribution supply chain management requires agility and precision. You don't have time to wade through disparate systems to find out where a single purchase order is when it's not on time.

Our Wholesale Distribution solution allows you to locate purchase orders in real time, accelerate inventory turns, and – most importantly – gain a unified view of your entire supply chain.



Traverse Systems is the best of the best. They have a vast amount of hands-on experience, and it shows in the way they operate. They've helped us build stronger partnerships with thousands of Suppliers, rapidly deploying a solution that fit seamlessly into our existing operations. This team steps up and gets results... every time.

Former Chief Supply Chain Officer, GNC



Get Started Today

Contact Barry Garvin for more information at barry@traversesystems.com, or 281-340-2034.

Greater Visibility. Greater Speed. Greater Performance.

IT'S ALL POSSIBLE WITH A UNIFIED UNDERSTANDING OF YOUR SUPPLY CHAIN

✓ Accelerate inventory turns, increase on-time deliveries (OTD) performance, and reduce out-of-stocks

With full visibility across your entire supply chain, you can identify the root causes of poor performance and implement targeted solutions so you can rapidly turn inventory without fear of out-of-stocks.

✓ Increase speed-to-shelf

In today's competitive landscape, speed-to-shelf is more important than ever. The result of increased performance is an increased ability to beat out the competition.

✓ Locate your stuff in real-time

When you have immediate access to the movement and location of your purchase orders, group of purchase orders, or items, you'll always have an answer to "Where's my stuff?"

✓ Rapidly onboard Suppliers and seize new market opportunities

Capitalize on emerging market trends with confidence that your Supplier onboarding process won't slow you down. Automate the steps and get all stakeholders on the same page.

✓ Spend far less time data wrangling across disparate systems

Spend your time and effort on improving performance – not digging through multiple systems to understand why yesterday's PO did not come in. With our solution, you get the data you need, all in one place.

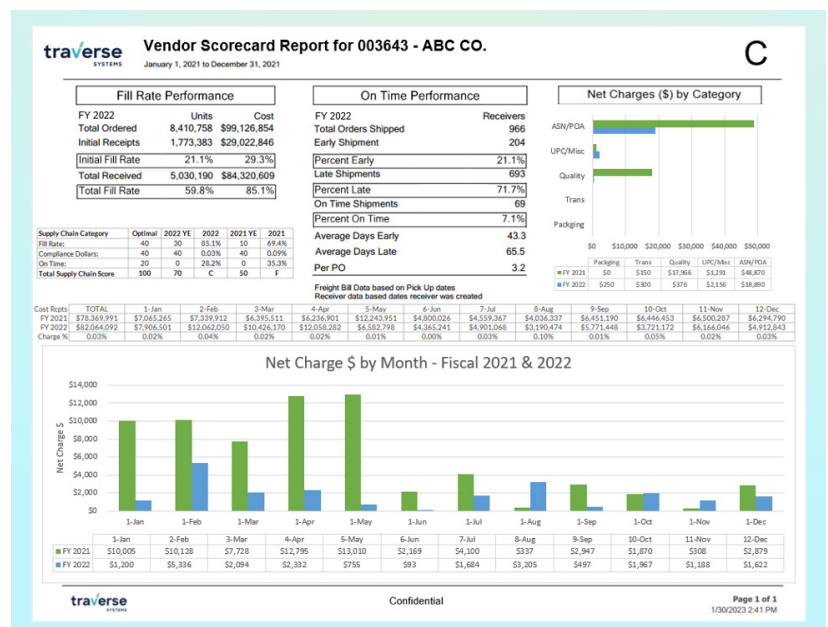


The Key to Increased Supplier Performance? Seamless Communication.

Stop wasting hours on phone calls, emails, and spreadsheets just to answer "Where's my stuff?"

Our solution helps you improve Supplier performance and speed-to-shelf with communication tools and capabilities that get everyone on the same page.

The Traverse Systems Supplier portal helps ensure that you and your Suppliers and procurement teams are on the same page. Enjoy hosting capabilities for Supplier requirements, training documents and videos as well as access to Supplier scorecards.



Easily Identify Areas for Improvement with Automated Supplier Scorecards.

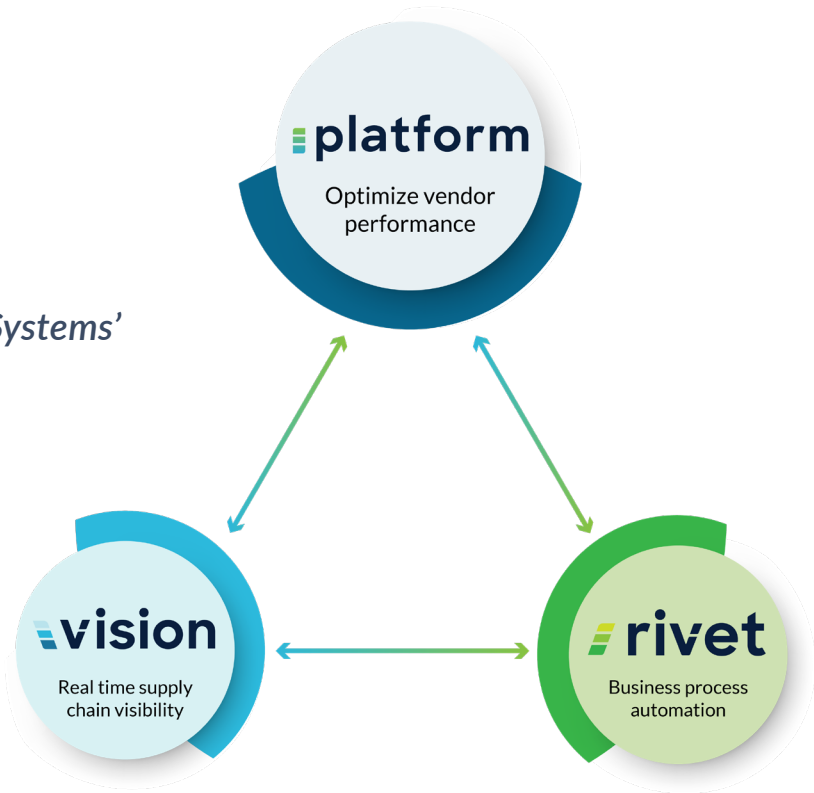
Our Supplier scorecards are one of the best ways to increase collaboration and facilitate a relationship centered on ongoing supply chain improvement. They allow you to automatically disseminate key metric feedback to your entire Supplier base on a consistent basis, ensuring everyone has what they need to improve performance.

Beyond KPIs, our scorecards also function as a single point of truth. When stakeholders are looking at the same information, everyone more readily arrives at the same conclusions, saving you time and money.

Traverse Systems builds Supplier scorecards tailored to your business priorities. Track metrics like PO accuracy, On Time Deliveries (OTD) performance, ASN accuracy and transportation compliance, and more.

Better Together

Amplify your results with Traverse Systems' full suite of products.



Schedule Your Demo Today

Contact Barry Garvin for more information at barry@traversesystems.com, or 281-340-2034.